

## GREY CONCRETE

**Sheet code:**

**MTGR**

**Designer:**

Revision:

02\_01/10/2015

Bellitalia Design Department



polished



sandblasted



bush hammered

**Features:**

To produce grey concrete, Portland cement is used with inert minerals from the local quarries.

**Finishing:**

The material can be subjected to polishing, sandblasting or bush hammering (standard finishing shown on the left) to give the product a sleek and shiny or a rough appearance.

**Treatment:**

All visible surfaces are covered with a transparent protective anti-decay coating that prevents water absorption ensuring inalterability of the product over time, while protecting it from erosion by air pollutants and from the formation of frost and mould. Upon request the goods can be treated with nanotechnology products or with an anti-graffiti varnish, which facilitates the removal of any signs of vandalism carried out with permanent markers or sprays.

**Maintenance:**

The grey concrete conglomerate is an extremely durable material that requires minimal maintenance. This purely consists of the treatment of the surface with very fine abrasive paper and in the re-application of one or more coats of the acrylic protective varnish. In case of accidental chipping of the artifacts made of conglomerate, BELLITALIA® provides a repair kit consisting of a bi-component material the same as the original. To apply simply clean the chipped area, removing any dust or deposits, and then apply the past-component. Once the drying is completed, it is sufficient to apply a coat of transparent acrylic anti-decay varnish.

## WHITE GRANITE

**Sheet code:**

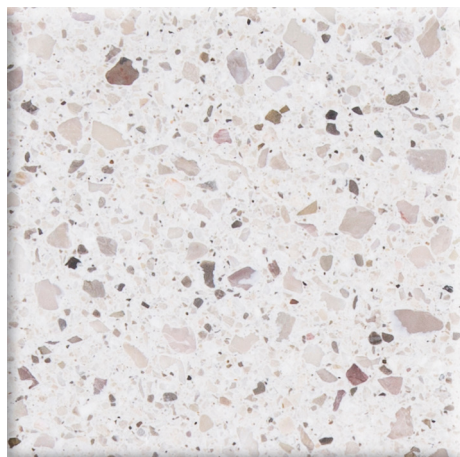
**MTGB**

**Designer:**

Revision:

02\_01/10/2015

Bellitalia Design Department



polished



sandblasted



bush hammered

**Features:**

To produce white granite, white Portland cement is used with white inert material from local quarries.

**Finishing:**

The material can be subjected to polishing, sandblasting or bush hammering (standard finishing shown on the left) to give the product a sleek and shiny or a rough appearance.

**Treatment:**

All visible surfaces are covered with a transparent protective anti-decay coating that prevents water absorption ensuring inalterability of the product over time and protect it from erosion by atmospheric pollutants and by the formation of frost and mould. On request, the goods can be treated with nanotechnology products or with anti-graffiti varnish, which facilitates the removal of any signs of vandalism carried out with permanent markers or sprays.

**Maintenance:**

The white granite conglomerate is an extremely durable material that requires minimal maintenance. This purely consists of the treatment of the surface with very fine abrasive paper and in the re-application of one or more coats of acrylic protective varnish. In case of accidental chipping of the artefacts made of conglomerate BELLITALIA® provides a repair kit consisting of a bi-component material the same as the original. To apply simply clean the chipped area, removing any dust or deposits, and then apply the past-component. Once the drying is completed, it is sufficient to apply a coat of transparent acrylic anti-decay varnish.

## WHITE CARRARA

**Sheet code:** *MTBC*

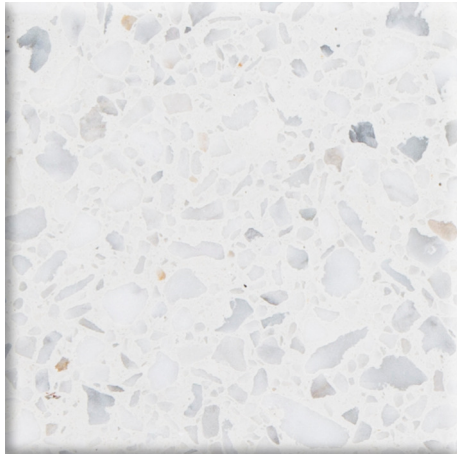
*MTBC*

**Designer:**

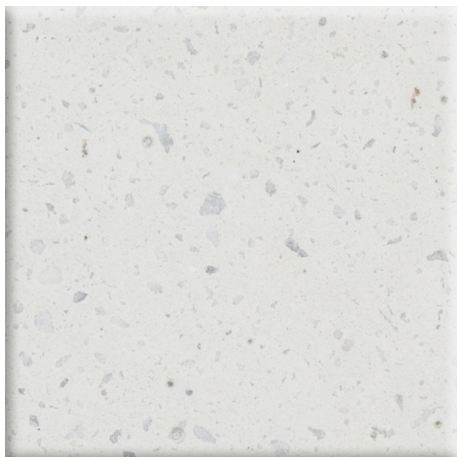
*Bellitalia Design Department*

**Revision:**

*02\_01/10/2015*



polished



sandblasted



bush hammered

**Features:**

To produce the marble stones conglomerate, white Portland cement is used with inert materials of various sizes from Italian marble quarries, in particular of White Carrara. The dust from the same natural stone gives the products its characteristic final colour.

**Finishing:**

The material can be subjected to polishing, sandblasting or bush hammering (standard finishing shown on the left) to give the product a sleek and shiny or a rough appearance.

**Treatment:**

All visible surfaces are covered with a transparent protective anti-decay coating that prevents water absorption ensuring inalterability of the product over time and protect it from erosion by atmospheric pollutants and by the formation of frost and mould. On request, the goods can be treated with nanotechnology products or with anti-graffiti varnish, which facilitates the removal of any signs of vandalism carried out with permanent markers or sprays.

**Maintenance:**

The natural marble stones conglomerate is an extremely durable material that requires minimal maintenance. This purely consists of the treatment of the surface with very fine abrasive paper and in the re-application of one or more coats of acrylic protective varnish. In case of accidental chipping of the artefacts made of conglomerate BELLITALIA® provides a repair kit consisting of a bi-component material the same as the original. To apply simply clean the chipped area, removing any dust or deposits, and then apply the past-component. Once the drying is completed, it is sufficient to apply a coat of transparent acrylic anti-decay varnish.

## BOTTICINO

**Sheet code:** *MTBO*

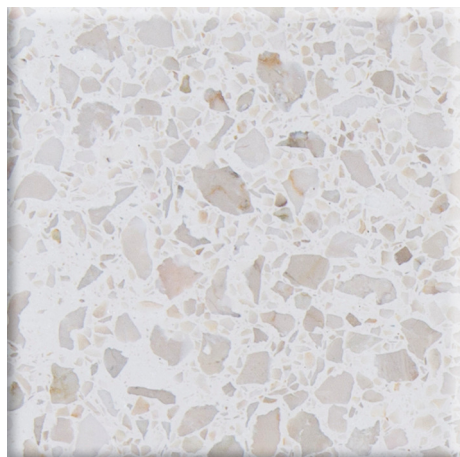
*MTBO*

**Designer:**

*Revision:*

*02\_01/10/2015*

*Bellitalia Design Department*



polished



sandblasted



bush hammered

**Features:**

To produce the marble stones conglomerate, white Portland cement is used with inert materials of various sizes from Italian marble quarries, in particular from Botticino. The dust from the same natural stone gives the products its characteristic final colour.

**Finishing:**

The material can be subjected to polishing, sandblasting or bush hammering (standard finishing shown on the left) to give the product a sleek and shiny or a rough appearance.

**Treatment:**

All visible surfaces are covered with a transparent protective anti-decay coating that prevents water absorption ensuring inalterability of the product over time and protect it from erosion by atmospheric pollutants and by the formation of frost and mould. On request, the goods can be treated with nanotechnology products or with anti-graffiti varnish, which facilitates the removal of any signs of vandalism carried out with permanent markers or sprays.

**Maintenance:**

The natural marble stones conglomerate is an extremely durable material that requires minimal maintenance. This purely consists of the treatment of the surface with very fine abrasive paper and in the re-application of one or more coats of acrylic protective varnish. In case of accidental chipping of the artefacts made of conglomerate BELLITALIA® provides a repair kit consisting of a bi-component material the same as the original. To apply simply clean the chipped area, removing any dust or deposits, and then apply the past-component. Once the drying is completed, it is sufficient to apply a coat of transparent acrylic anti-decay varnish.

## YELLOW MORI

**Sheet code:**

**MTGM**

**Designer:**

Revision:

02\_01/10/2015

Bellitalia Design Department



polished



sandblasted



bush hammered

**Features:**

To produce the marble stones conglomerate, white Portland cement is used with inert materials of various sizes from Italian marble quarries, in particular of Yellow Mori. The dust from the same natural stone gives the products its characteristic final colour.

**Finishing:**

The material can be subjected to polishing, sandblasting or bush hammering (standard finishing shown on the left) to give the product a sleek and shiny or a rough appearance.

**Treatment:**

All visible surfaces are covered with a transparent protective anti-decay coating that prevents water absorption ensuring inalterability of the product over time and protect it from erosion by atmospheric pollutants and by the formation of frost and mould. On request, the goods can be treated with nanotechnology products or with anti-graffiti varnish, which facilitates the removal of any signs of vandalism carried out with permanent markers or sprays.

**Maintenance:**

The natural marble stones conglomerate is an extremely durable material that requires minimal maintenance. This purely consists of the treatment of the surface with very fine abrasive paper and in the re-application of one or more coats of acrylic protective varnish. In case of accidental chipping of the artefacts made of conglomerate BELLITALIA® provides a repair kit consisting of a bi-component material the same as the original. To apply simply clean the chipped area, removing any dust or deposits, and then apply the past-component. Once the drying is completed, it is sufficient to apply a coat of transparent acrylic anti-decay varnish.

## VENEZIANO

**Sheet code:**

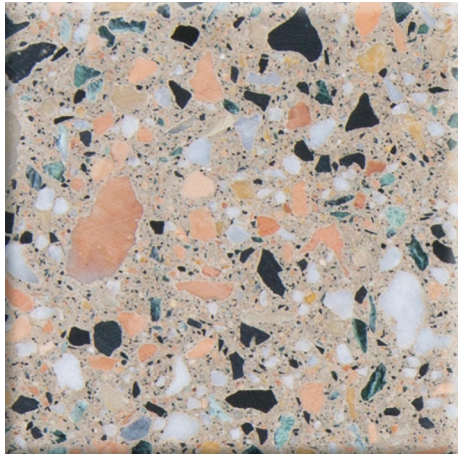
**MTVE**

**Designer:**

Revision:

02\_01/10/2015

Bellitalia Design Department



polished



sandblasted



bush hammered

**Features:**

To produce the marble stones conglomerate, white Portland cement is used with inert materials of various sizes from Italian marble quarries. The dust from the same natural stone gives the products its characteristic final colour.

**Finishing:**

The material can be subjected to polishing, sandblasting or bush hammering (standard finishing shown on the left) to give the product a sleek and shiny or a rough appearance.

**Treatment:**

All visible surfaces are covered with a transparent protective anti-decay coating that prevents water absorption ensuring inalterability of the product over time and protect it from erosion by atmospheric pollutants and by the formation of frost and mould. On request, the goods can be treated with nanotechnology products or with anti-graffiti varnish, which facilitates the removal of any signs of vandalism carried out with permanent markers or sprays.

**Maintenance:**

The natural marble stones conglomerate is an extremely durable material that requires minimal maintenance. This purely consists of the treatment of the surface with very fine abrasive paper and in the re-application of one or more coats of acrylic protective varnish. In case of accidental chipping of the artefacts made of conglomerate BELLITALIA® provides a repair kit consisting of a bi-component material the same as the original. To apply simply clean the chipped area, removing any dust or deposits, and then apply the past-component. Once the drying is completed, it is sufficient to apply a coat of transparent acrylic anti-decay varnish.

## RED VERONA

**Sheet code:** *MTRV*

*MTRV*

**Designer:**

*Revision:*

*02\_01/10/2015*

*Bellitalia Design Department*



polished



sandblasted



bush hammered

**Features:**

To produce the marble stones conglomerate, white and gray Portland cement is used with inert materials of various sizes from Italian marble quarries, in particular of Red Verona. The dust from the same natural stone gives the products its characteristic final colour.

**Finishing:**

The material can be subjected to polishing, sandblasting or bush hammering (standard finishing shown on the left) to give the product a sleek and shiny or a rough appearance.

**Treatment:**

All visible surfaces are covered with a transparent protective anti-decay coating that prevents water absorption ensuring inalterability of the product over time and protect it from erosion by atmospheric pollutants and by the formation of frost and mould. On request, the goods can be treated with nanotechnology products or with anti-graffiti varnish, which facilitates the removal of any signs of vandalism carried out with permanent markers or sprays.

**Maintenance:**

The natural marble stones conglomerate is an extremely durable material that requires minimal maintenance. This purely consists of the treatment of the surface with very fine abrasive paper and in the re-application of one or more coats of acrylic protective varnish. In case of accidental chipping of the artefacts made of conglomerate BELLITALIA® provides a repair kit consisting of a bi-component material the same as the original. To apply simply clean the chipped area, removing any dust or deposits, and then apply the past-component. Once the drying is completed, it is sufficient to apply a coat of transparent acrylic anti-decay varnish.

## TRENTO PORPHYRY

**Sheet code:** *MTPT*

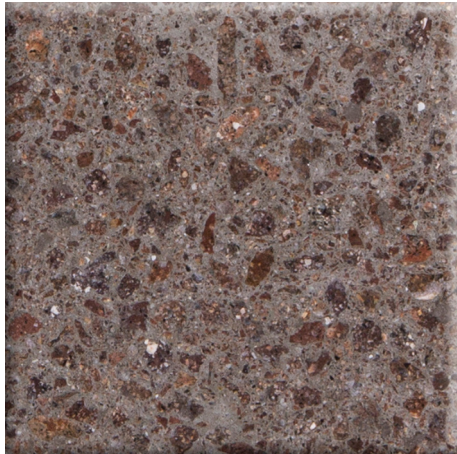
*MTPT*

**Designer:**

*Revision:*

*02\_01/10/2015*

*Bellitalia Design Department*



polished



sandblasted



bush hammered

**Features:**

To produce the marble stones conglomerate, white and gray Portland cement is used with inert materials of various sizes from Italian marble quarries, in particular of Trento Porphyry. The dust from the same natural stone gives the products its characteristic final colour.

**Finishing:**

The material can be subjected to polishing, sandblasting or bush hammering (standard finishing shown on the left) to give the product a sleek and shiny or a rough appearance.

**Treatment:**

All visible surfaces are covered with a transparent protective anti-decay coating that prevents water absorption ensuring inalterability of the product over time and protect it from erosion by atmospheric pollutants and by the formation of frost and mould. On request, the goods can be treated with nanotechnology products or with anti-graffiti varnish, which facilitates the removal of any signs of vandalism carried out with permanent markers or sprays.

**Maintenance:**

The natural marble stones conglomerate is an extremely durable material that requires minimal maintenance. This purely consists of the treatment of the surface with very fine abrasive paper and in the re-application of one or more coats of acrylic protective varnish. In case of accidental chipping of the artefacts made of conglomerate BELLITALIA® provides a repair kit consisting of a bi-component material the same as the original. To apply simply clean the chipped area, removing any dust or deposits, and then apply the past-component. Once the drying is completed, it is sufficient to apply a coat of transparent acrylic anti-decay varnish.



## GREEN ALPS

**Sheet code:**

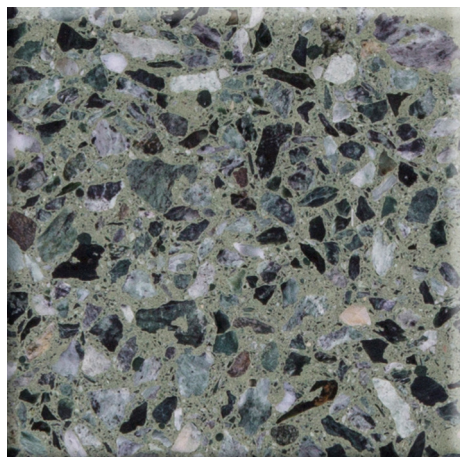
**MTVA**

**Designer:**

Revision:

02\_01/10/2015

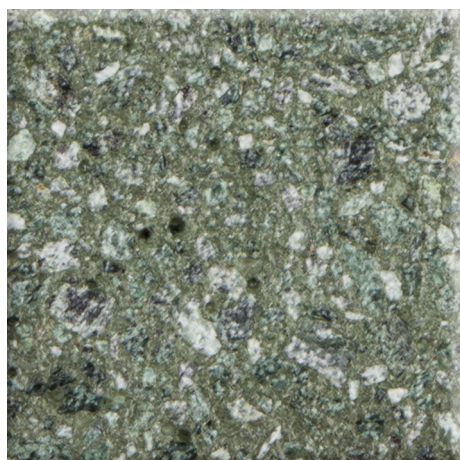
Bellitalia Design Department



polished



sandblasted



bush hammered

**Features:**

To produce the marble stones conglomerate, gray Portland cement is used with inert materials of various sizes from Italian marble quarries, in particular of Green Alps. The dust from the same natural stone gives the products its characteristic final colour.

**Finishing:**

The material can be subjected to polishing, sandblasting or bush hammering (standard finishing shown on the left) to give the product a sleek and shiny or a rough appearance.

**Treatment:**

All visible surfaces are covered with a transparent protective anti-decay coating that prevents water absorption ensuring inalterability of the product over time and protect it from erosion by atmospheric pollutants and by the formation of frost and mould. On request, the goods can be treated with nanotechnology products or with anti-graffiti varnish, which facilitates the removal of any signs of vandalism carried out with permanent markers or sprays.

**Maintenance:**

The natural marble stones conglomerate is an extremely durable material that requires minimal maintenance. This purely consists of the treatment of the surface with very fine abrasive paper and in the re-application of one or more coats of acrylic protective varnish. In case of accidental chipping of the artefacts made of conglomerate BELLITALIA® provides a repair kit consisting of a bi-component material the same as the original. To apply simply clean the chipped area, removing any dust or deposits, and then apply the past-component. Once the drying is completed, it is sufficient to apply a coat of transparent acrylic anti-decay varnish.

## BLACK EBONY

**Sheet code:** *MTNE*

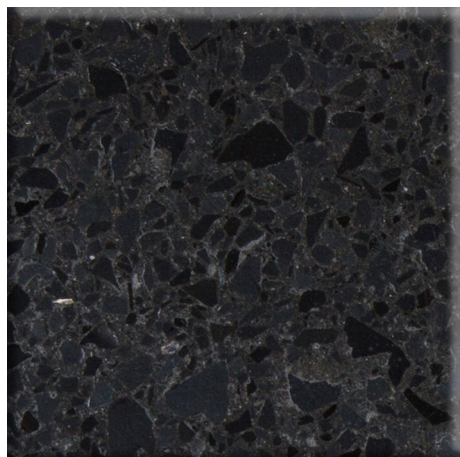
*MTNE*

**Designer:**

*Revision:*

*02\_01/10/2015*

*Bellitalia Design Department*



polished



sandblasted



bush hammered

**Features:**

To produce the marble stones conglomerate, gray Portland cement is used with inert materials of various sizes from Italian marble quarries, in particular of Black Ebony. The dust from the same natural stone gives the products its characteristic final colour.

**Finishing:**

The material can be subjected to polishing, sandblasting or bush hammering (standard finishing shown on the left) to give the product a sleek and shiny or a rough appearance.

**Treatment:**

All visible surfaces are covered with a transparent protective anti-decay coating that prevents water absorption ensuring inalterability of the product over time and protect it from erosion by atmospheric pollutants and by the formation of frost and mould. On request, the goods can be treated with nanotechnology products or with anti-graffiti varnish, which facilitates the removal of any signs of vandalism carried out with permanent markers or sprays.

**Maintenance:**

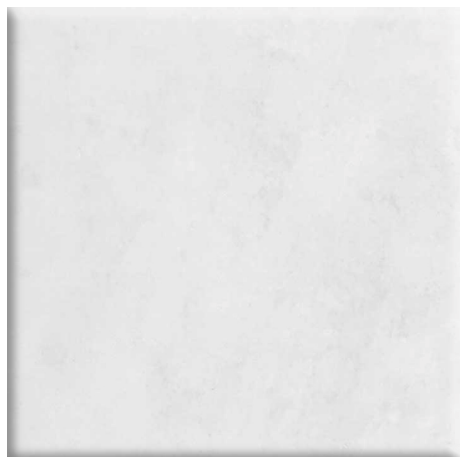
The natural marble stones conglomerate is an extremely durable material that requires minimal maintenance. This purely consists of the treatment of the surface with very fine abrasive paper and in the re-application of one or more coats of acrylic protective varnish. In case of accidental chipping of the artefacts made of conglomerate BELLITALIA® provides a repair kit consisting of a bi-component material the same as the original. To apply simply clean the chipped area, removing any dust or deposits, and then apply the past-component. Once the drying is completed, it is sufficient to apply a coat of transparent acrylic anti-decay varnish.

**UTC®  
ULTRATENSE CONCRETE****Sheet code:****MTUC****Designer:**

Revision:

02\_01/10/2015

Bellitalia Design Department



White



Charcoal Gray

**Features:**

This new material is the result of continuous research and innovation by the technical and engineering departments in BELLITALIA® and embodies a close collaboration with one of the most advanced centres for the study of engineering materials: the Polytechnic University of Marche. Laboratories with the latest equipment and a team of researchers of the highest level, combined with the experience of the company, have enabled us to obtain a unique formula, with excellent characteristics of utility, strength, finishing and safety. The mixture is designed to withstand low temperatures as well as higher ones. Some of the key features that make this material unique include a bending strength of up to eight times higher than traditional cement and a finishing that perfectly copies the mould.

**Finishing:**

The material is natural smooth.

**Treatment:**

All surfaces are natural smooth and visible ones are treated with shiny or satin transparent protective acrylic anti-decay paints, or, on request, with nanotechnology or anti-graffiti products.

**Maintenance:**

It is necessary to clean the piece thoroughly with low pressurised water and re-apply the protective varnish.

## FINISHING

**Sheet code:**

**MTFT**

**Designer:**

Revision:

02\_01/10/2015

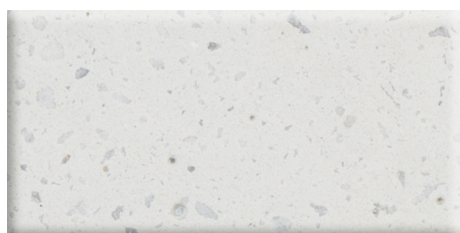
Bellitalia Design Department



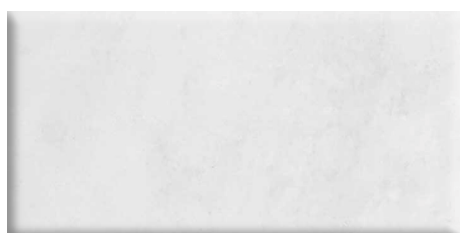
Polishing



Bush hammering



Sandblasting



Smooth natural



Glossy paint

**Polishing:**

The piece is subjected to manual or mechanical polishing with robotic machines that remove the surface layer of the material to give the product a sleek, shiny and bright look.

**Bush hammering:**

The bush hammered finishing breaks the surface stones, giving the product a rough appearance that brings out the best of the fine aggregates that compose it.

**Sandblasting:**

The jet of sand used for this finishing, removing a very fine layer of the material, allows the most uniform surface of the product.

**Smooth natural:**

The silky finish of the piece just out of the mould.

**Glossy paint:**

Exclusively for the products of the Organic line, based on a treatment of a bi-component base, is carried out using intense and brilliant colour paint with acrylic-polyurethane UV-resistant varnish, the same used for the automotive industry.

## WOOD

**Sheet code:**

**MTLG**

**Designer:**

Revision:

02\_01/10/2015

Bellitalia Design Department



Okoumè



Movingui



Pine



Pine Thermowood®



Accoya®

**Features:**

Bellitalia uses only precious woods, specifically carved and chosen based on their external and mechanical characteristics, which are different and specific for each application. The following different types of essence are offered according to the different needs of the customer:

**Okoumè** (exotic)

**Movingui** (exotic)

**Pine - Thermowood®** version available (Europe)

**Accoya®** (Europe)

**Treatment:**

**Water based DEEP IMPREGNATION:** for Okoumè, Movingui, Pine and Pine Thermowood®, to deeply preserve the wood from erosion by moulds, atmospheric agents, parasites and fungi. The treatment can result in a natural appearance, or modify the wood's pigmentation according to the different needs.

**VARNISHING:** after impregnation the material is treated with a water-based transparent varnish, recommended in particular for pine wood, and indicated also for Movingui and Okoumè, according to the different needs. Alternatively it is possible to request an ultra-resistant coating, like Sikkens, which greatly extend the lifetime of wood (available at an extra cost). For Pine Thermowood® and Accoya® the varnishing is optional, being the woods already treated.

**OILING:** treatment based on modified natural oils, recommended for woods surfaces in external areas. Thanks to its formulation it nourishes and protects the wood, enhancing its natural beauty, and protecting it from water, atmospheric agents, moulds and fungi. Enriched with anti-UV filters it limits the wood from becoming gray, and maintains its essence lively and intense. Specifically recommended for hard exotic woods put in the sunlight, like Movingui and Okoumè. Available also for Pine and Pine Thermowood®.

**Maintenance:**

Maintenance depends on environmental and atmospheric factors that may influence the material and the employed products' ageing. Daily exposure to UV rays, temperature, humidity, frost, wind, rain and pollution result in a need of periodic operations and maintenance. Maintenance sheets, provided with each product's lot, explain in detail the dedicated operations and the standard interval of maintenance. A periodical check of the surfaces' status is advised.

**Attention:** wood is a noble natural material, composed by cellulose fibres held together by a wooden matrix; it is considered a living material, and it may change according to different atmospheric conditions. This is why all maintenance operations, even if simple, are essential to make wood a nice and durable material. According to the undergone treatment and to direct or indirect use conditions wood may change its appearance, showing colours variations and slight, natural deformations.

**STONEWARE****Sheet code:****MTGS****Designer:**

Revision:

02\_01/10/2015

Bellitalia Design Department



Light Stoneware



Dark Stoneware

**Features:**

Porcelain stoneware is a material that provides convenience, durability and high aesthetic, presenting technical characteristics and colours that remain almost unchanged over time. It is a material with an exceptional life cycle and no maintenance costs, it is light, frost-resistant, thermal-shock resistant, easy to clean and sterilise with ecological products, hypoallergenic, resistant to mould, chemicals and corrosion of salt, it is suitable for both normal environmental conditions either next to water or underwater. Recyclable and environmentally friendly, it is a product that fits perfectly into the new collection as a green, nature-friendly material.

**Maintenance:**

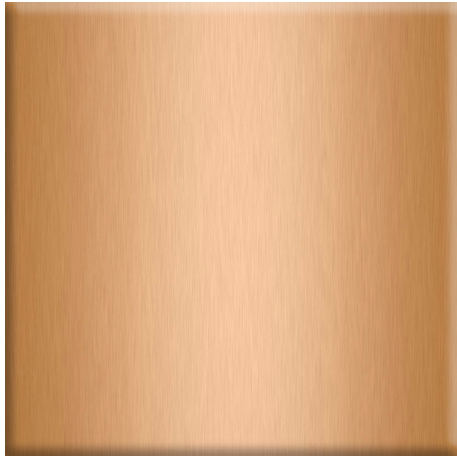
Simply wipe the surface of the product with a cloth and detergent.

**BRASS****Sheet code:****MTRA****Designer:**

Revision:

02\_01/10/2015

Bellitalia Design Department



polished

**Features:**

Copper is used for decorative bands or to make some parts of the products, and consists of pure copper sheets.

**Treatment:**

The decorative bands are painted with a transparent protective coating, while the constituent parts of the pieces are burnished and then painted.

**Maintenance:**

Simply wipe the surface of the product with a cloth and detergent.

**STAINLESS STEEL****Sheet code:****MTIN****Designer:**

Revision:

02\_01/10/2015

Bellitalia Design Department



Stainless steel

**Features:**

The stainless steel used to make the components of our products is either the 304L or 316 type. The 316 is recommended for products that may be positioned in close proximity to areas of extreme presence of aggressive components such as ferrous contamination or saline.

**Treatment:**

The stainless steel always undergoes a satin finish treatment and subsequent electro-polishing to enhance the technical and visual quality.

**Maintenance:**

Simply wipe the surface of the product with a cloth and detergent.



**STEEL – RAL7021****Sheet code:****MTAC****Designer:**

Revision:

02\_01/10/2015

Bellitalia Design Department



RAL7021

**Treatment:**

Steel is always treated by a hot dip galvanization and painted normally with RAL7021. On request, at an extra cost, the painting can be customised with the desired RAL.

**Maintenance:**

Simply wipe the surface of the product with a cloth and detergent.

## TECHNICAL DETAILS

**Sheet code:**

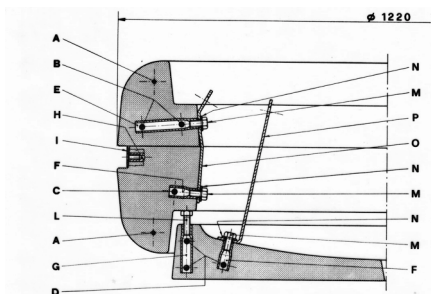
**MTDT**

**Revision:**

02\_01/10/2015

**Designer:**

Bellitalia Design Department



Levelling system

**Levelling system:**

The levelling system is definitely one of the main patented functional systems that have made BELLITALIA® products famous. It allows compensation for the slope of the ground by up to a maximum of 6%, obtaining a level effect from a visual standpoint.

**Water reserve system and overflow discharge:**

Another important patent that has allowed such a wide spread of BELLITALIA® planters over the years is the system of water supply and drain overflow, applied to all BELLITALIA® planters.

To ensure a plant's long life, the combined system of water supply ensures a continuous hydration of the roots and their aeration, while the discharge of the overflow is designed for the elimination of excess water, which helps prevent rot.



Water reserve system and overflow discharge

**Handling:**

Each product is designed so as to be easily and safely handled by straps or chains. For this, bushes are provided for the movement of each individual product. After the placement, they are covered with a BELLITALIA® plate.

**Packaging:**

The products are shipped on pallets in order to facilitate the unloading by the customer and packed with corner protectors and spacers in order to protect them during transport.



Handling



Packaging